

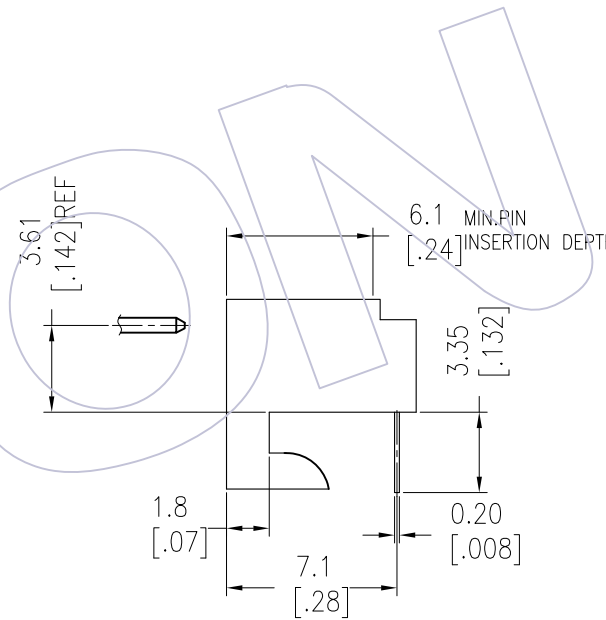
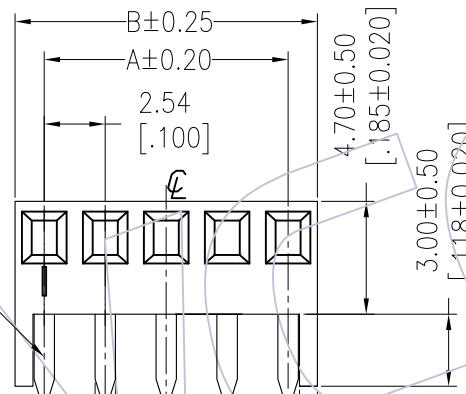
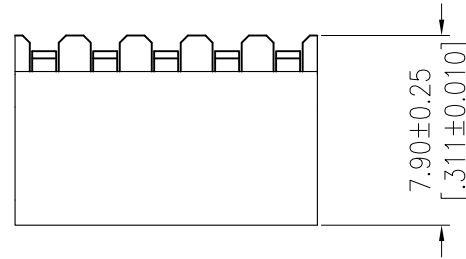
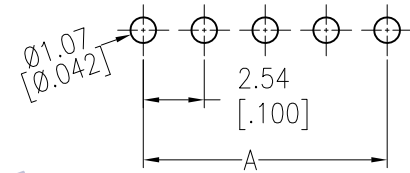
HSF

NOTES:

Current Rating:2.5AMP AC/DC
 Voltage Rating:250V AC/DC
 Contact Resistance:20mΩ max
 Withstand Voltage:1000V AC/minute
 Insulation Resistance:1000MΩ min
 Operation Temperature:-25°C to +85°C

Contact Material:Phorphos bronze
 Contact plating:Sn Over Ni
 Insulator Material:PA66 UL94V-0

Recommended P.C.B Layout(Top Side)
 (PCB BOARD TOLERANCE±0.05)



Dimensional & Ordering Information:

Circuit	Part No.	Dimension	
		A	B
02	WF25411-WR02XX1	2.54	4.98
03	WF25411-WR03XX1	5.08	7.52
04	WF25411-WR04XX1	7.62	10.06
05	WF25411-WR05XX1	10.16	12.60
06	WF25411-WR06XX1	12.70	15.14
07	WF25411-WR07XX1	15.24	17.68
08	WF25411-WR08XX1	17.78	20.22
09	WF25411-WR09XX1	20.32	22.76
10	WF25411-WR10XX1	22.86	25.30
11	WF25411-WR11XX1	25.40	27.84
12	WF25411-WR12XX1	27.96	30.38
13	WF25411-WR13XX1	30.48	32.92
14	WF25411-WR14XX1	33.02	35.46
15	WF25411-WR15XX1	35.56	38.00
16	WF25411-WR16XX1	38.10	40.54
17	WF25411-WR17XX1	40.64	43.08
18	WF25411-WR18XX1	43.18	45.62
19	WF25411-WR19XX1	45.72	48.16
20	WF25411-WR20XX1	48.26	50.70
21	WF25411-WR21XX1	50.80	53.24
22	WF25411-WR22XX1	53.34	55.78
23	WF25411-WR23XX1	55.88	58.32
24	WF25411-WR24XX1	58.42	60.86
25	WF25411-WR25XX1	60.96	63.40

Ordering Information

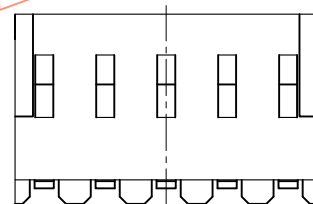
WF 25411 - WR XX X X 1

No. of pins
02~25pin

Color
B=Black
W=White

Packing
T=Tube

CIRCUIT 1



REV	DATE	MODIFICATION DESCRIPTION	CHANGE	OPERATION		DRAW 丁文敏	DATE 2017. 03. 07	SCALE UNIT	FIT mm	PART NO. SEE TAB	TITLE: 2.54mm WAFER 90°DIP	Customer NO.	WCON	
				X.X	±0.40								Http: www.wcon.com	
AO	2017. 03. 07	NEW		X.XX	±0.25	CHECK	DATE	SIZE	A4				WCON-Dongguan Tel: +86 769 85358920 Fax: +86 769 85358915 E-mail: sales@wcon.com	WCON-Kunshan Tel: +86 512 57468408 Fax: +86 512 57468468 E-mail: sales@wcon.com
				X.XXX	±0.15	APPROVE	DATE	SHEET	1/1					
				Angle	± 3'			PROJ.	⌀					