

HSF

NOTES:
 Current Rating: 3.0AMP
 Contact Resistance: 25mΩ Max
 Withstand Voltage: 500V AC/Minute
 Insulation Resistance: 1000MΩ Min
 Operation Temperature: -55°C to +105°C

Contact Material: Brass
 Contact plating: Au Or Sn over Ni
 Insulator Material: PA66+30%G.F UL94V-0
 Shell: Cold Roller Steel, Ni Plated
 Revit/Harpoon: Brass, Sn Over Ni Plated

Print Date Code:

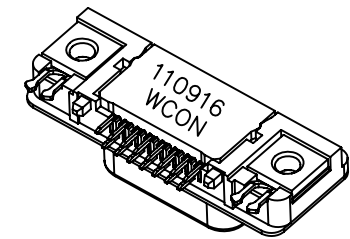
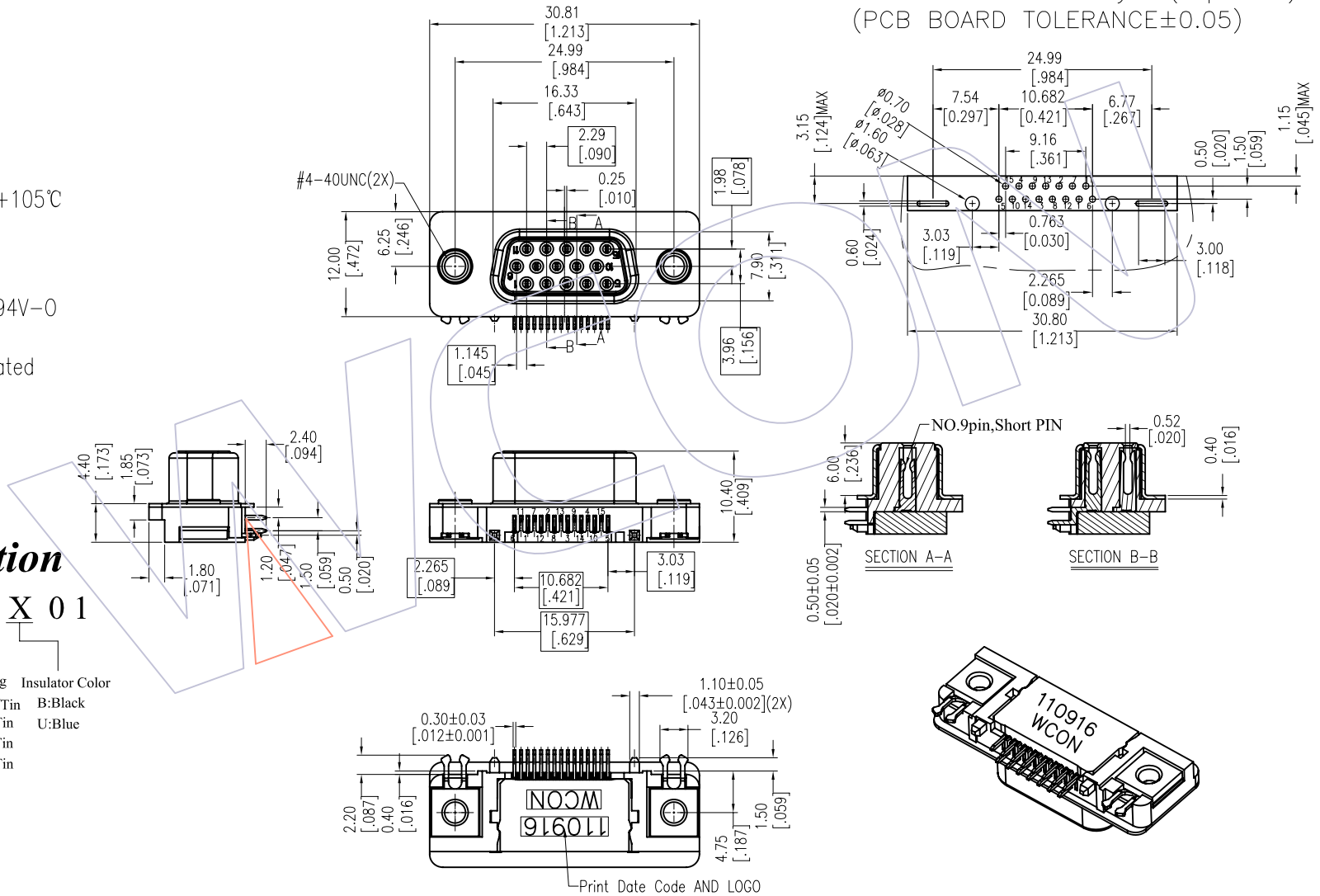
XX XX XX
 Year Month Date

Ordering Information

6215A-15 F M N XX X 01

No. of Pins 15P	Product Type M=With Revit Without Screw	Contact Plating S0=Gold Flash/Tin S3=10u"Gold/Tin S4=15u"Gold/Tin S5=30u"Gold/Tin SN=Tin	Insulator Color B:Black U:Blue
--------------------	---	---	--------------------------------------

Recommended P.C.B Layout(Top Side)
 (PCB BOARD TOLERANCE±0.05)



REV	DATE	MODIFICATION DESCRIPTION	CHANGE	OPERATION	DRAW	DATE	SCALE	FIT	PART NO.
				x.x ±0.40	JYHuang	2012/12/18	UNIT	mm	6215A-15FMNXXX01
				x.xx ±0.25	CHECK	DATE	SIZE	A4	TITLE: Slim HD/R 15P FEMALE, 90° DIP, Short 9PIN
				x.xxx ±0.15	APPROVE	DATE	SHEET	1/1	Customer NO.
				Angle ± 3'			PROJ.		
				DIM TOL					

WCON
 Http: www.wcon.com

WCON-Dongguan Tel: +86 769 85358920 Fax: +86 769 85358915 E-mail: sales@wcon.com	WCON-Kunshan Tel: +86 512 57468408 Fax: +86 512 57468468 E-mail: salesks@wcon.com
---	--